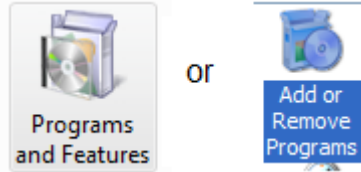


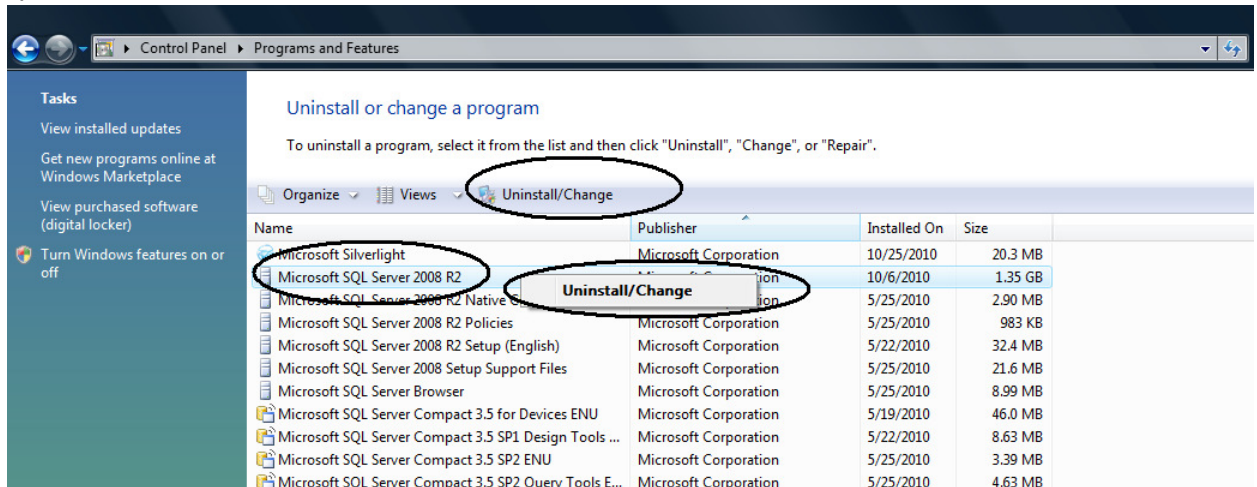
Uninstall CLMS2PC Database Instructions

The un-install instructions for the database should only be performed when instructed by a coordinator, CLMS2PC HelpDesk staff or you are sure that you want to completely remove the database and its associated data from a particular computer.

- 1) Once again from control panel either Click Add/Remove programs or Programs and Features icon, depending on your operating system.



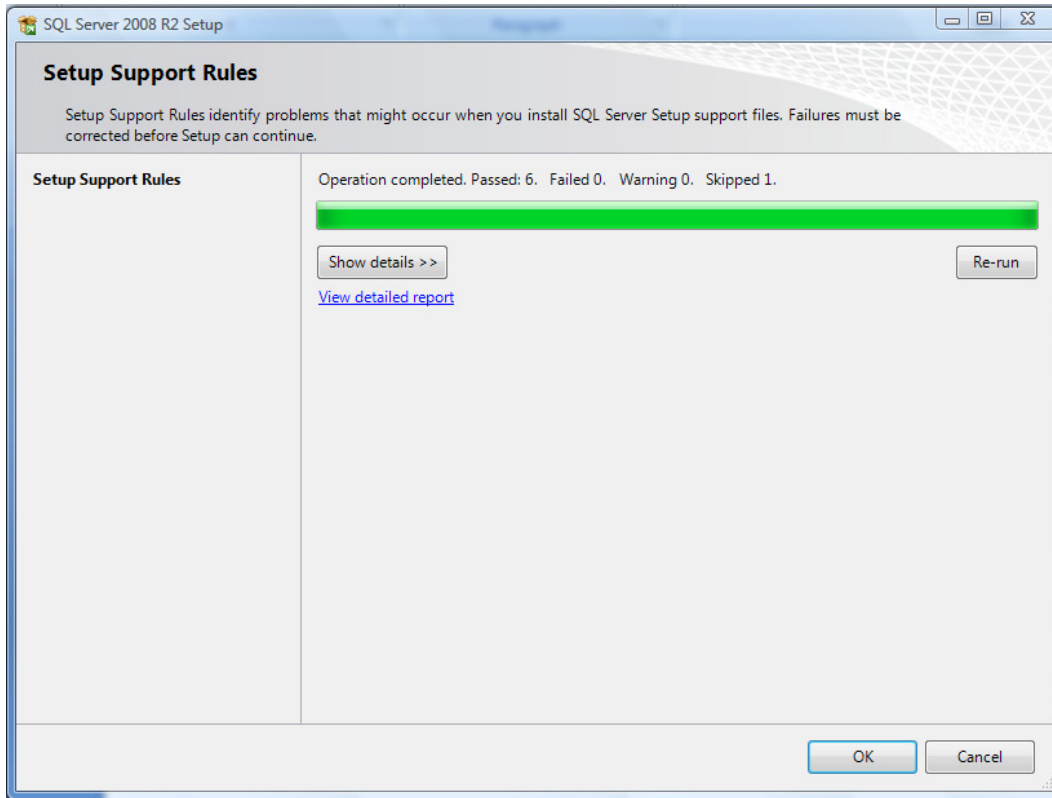
- 2) Locate and select “Microsoft SQL Server 2008 R2, click or select “Uninstall/Change” option.



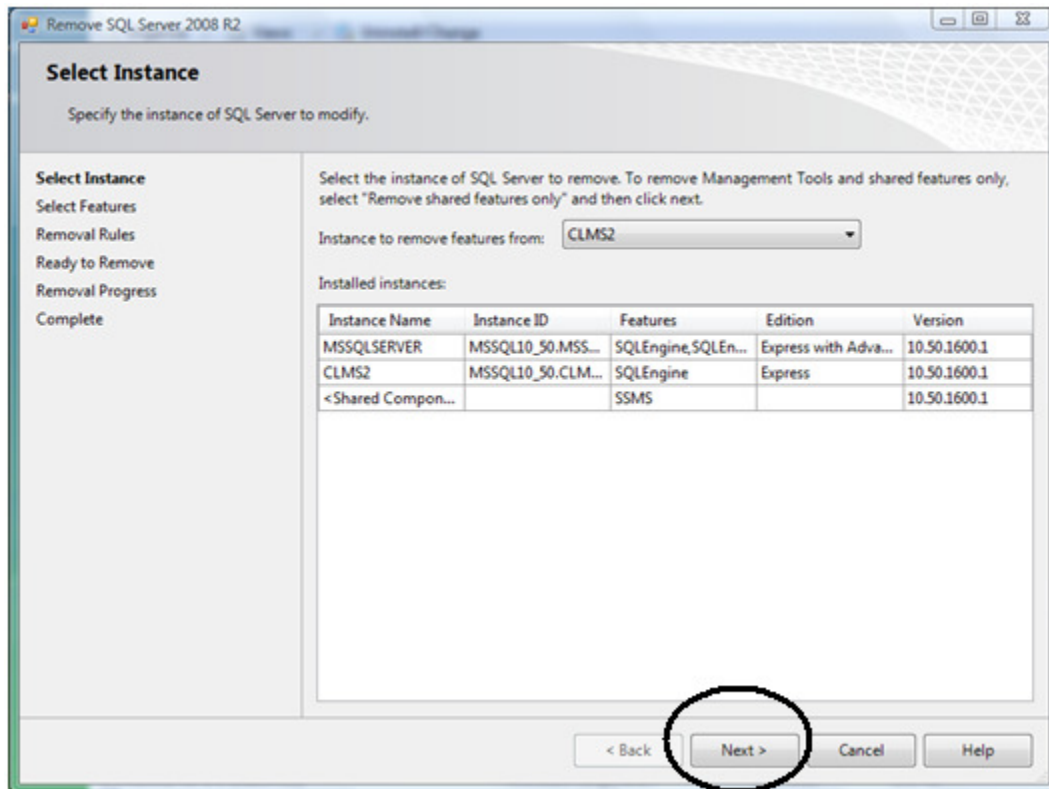
- 3) Depending on your security settings you may get prompted to allow or deny this action click “Allow” or “OK”
- 4) Click the “Remove” option.



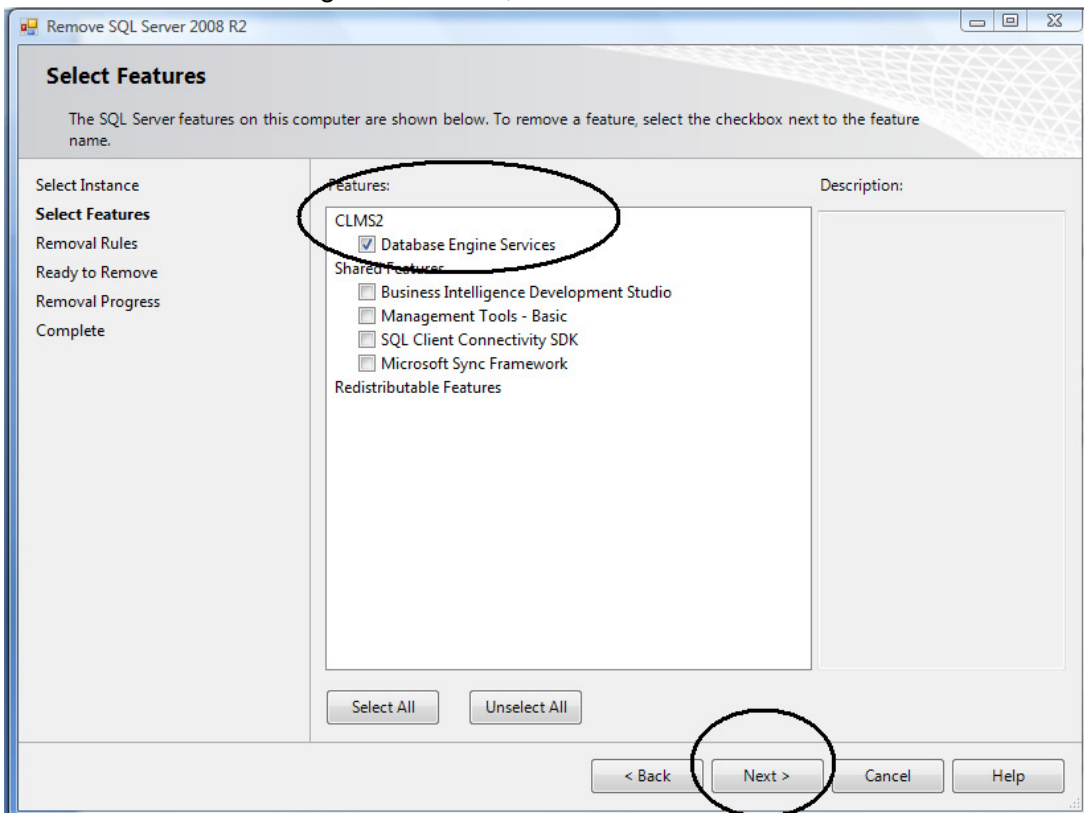
- 5) There will be a series of messages indicating the removal process. Once this screen appears there should be an Operation completed indication you may now click the "OK" button to proceed.



- 6) You will get another message indicating to wait. Select the Instance called “CLMS2” from the drop down shown below once this window appears then click the “Next” button.

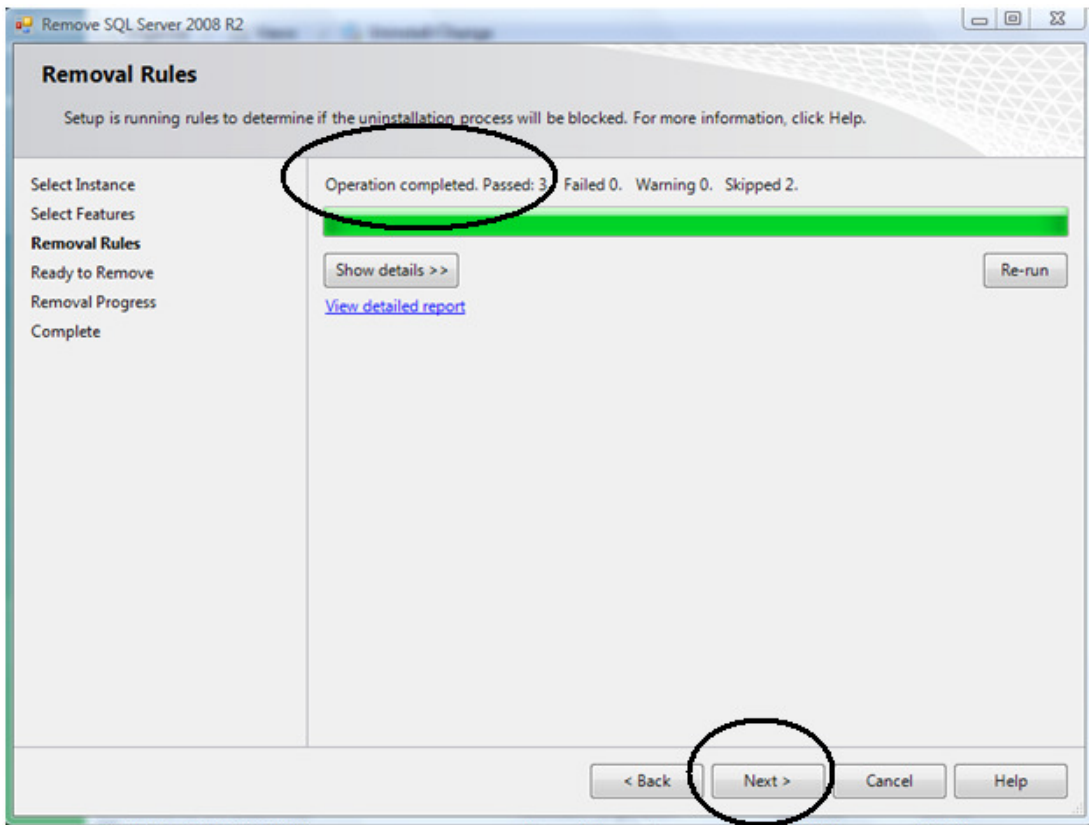


- 7) Check the “Database Engine Services”, below the CLMS2 instance.

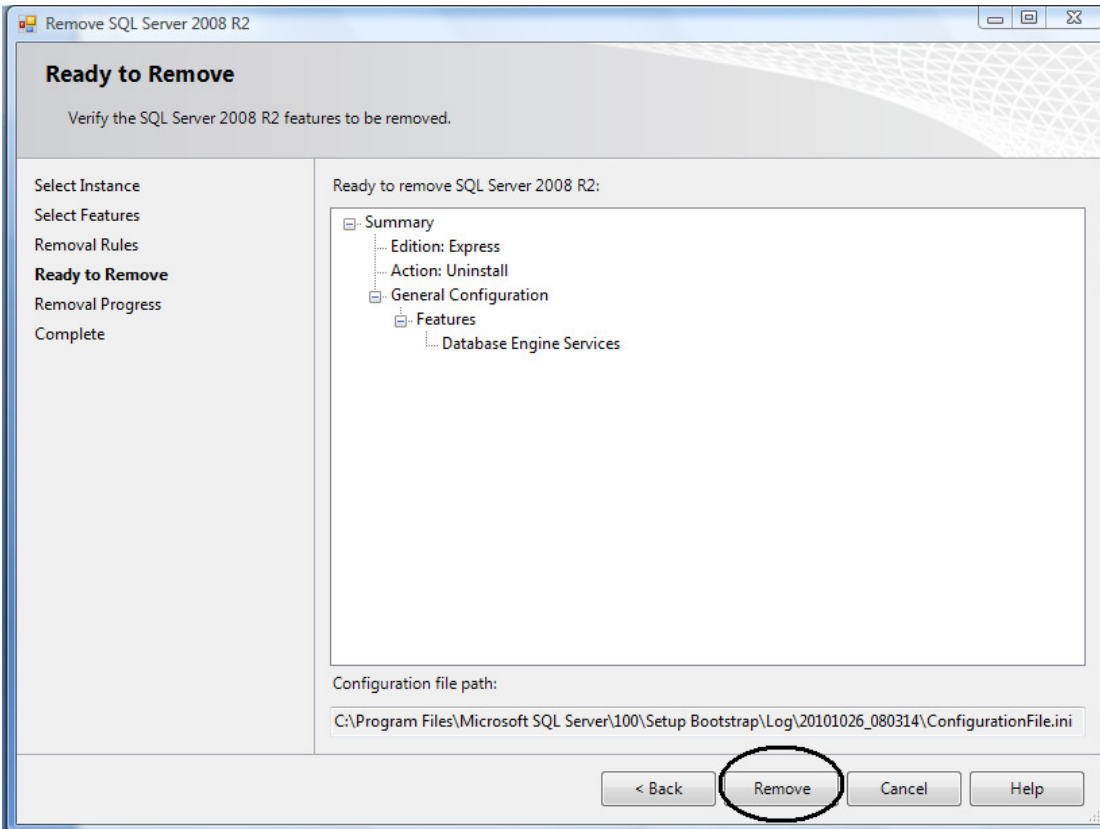


- 8) You will see progress as it's un-installed with a message to please wait. Once this window appears, it should indicate that the Operation completed, you can then click the

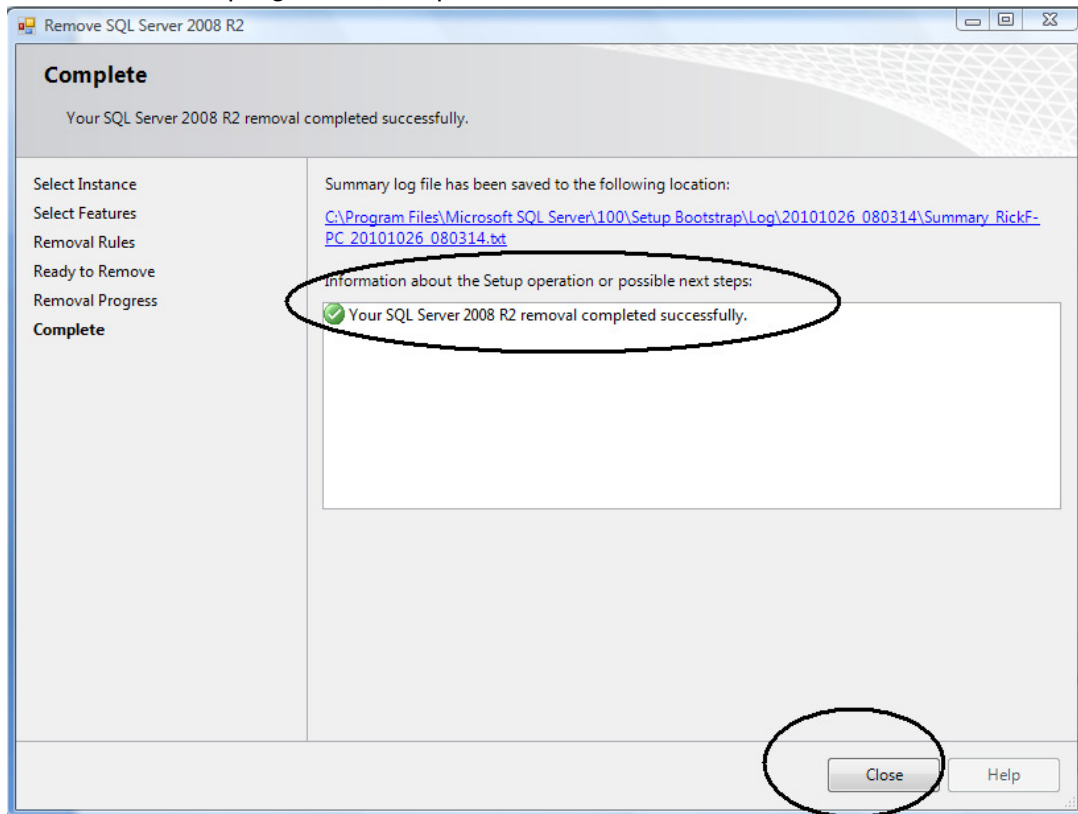
next button



9) You shall eventually see the screen below at this point click the "Remove" button.



10) You will view the progress of this process, then



11) You have successfully uninstalled the database