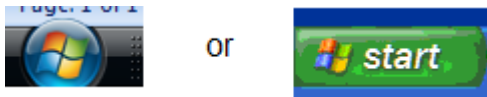


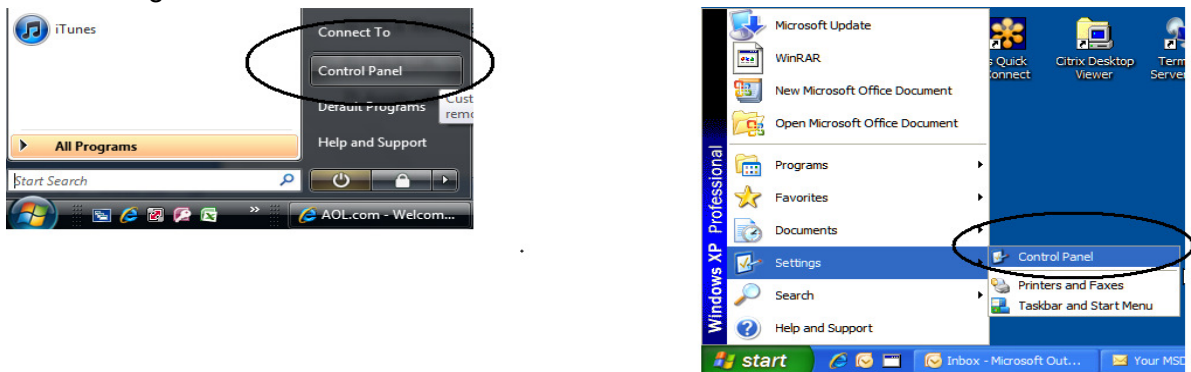
Uninstall CLMS2PC Application Instructions

The un-install instructions should only be performed when instructed by a coordinator, CLMS2 CLMS2 HelpDesk staff or you are sure that you want to completely remove the application from a particular computer. This un-install will remove the application from the client computer but will leave the database intact (**see the instructions below *CLMS2 Database Uninstall Instructions to remove the data as well***).

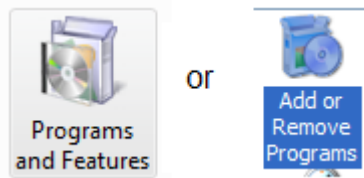
- 1) Make sure the CLMS2PC is not running by rebooting your computer and restarting windows.
- 2) Once you have restarted your computer you can click either (Click Start or Windows Logo) button, depending on your version of these buttons are typically located in the lower left hand corner of your screen.



- 3) Click Settings or Control Panel from either of these menus.

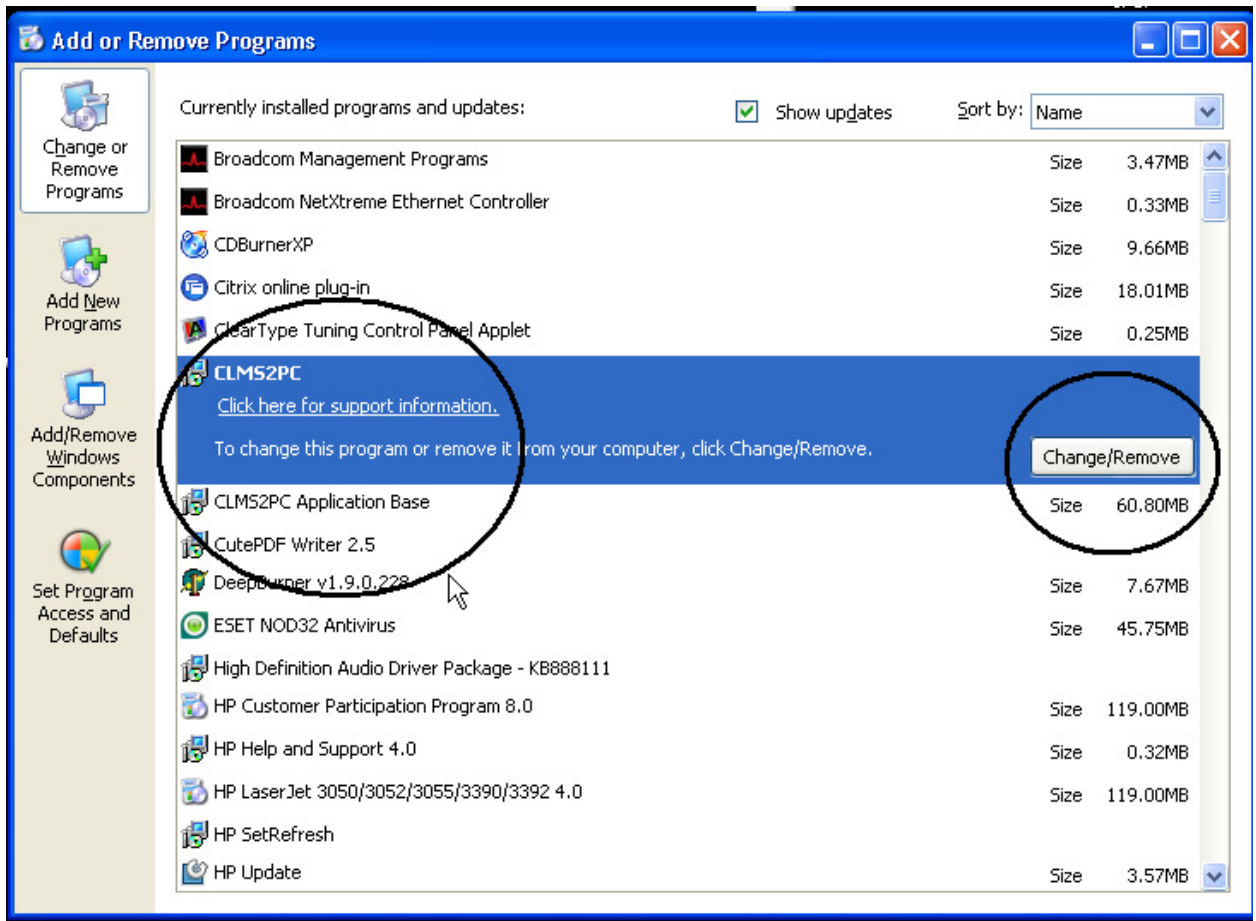


- 4) Click Add/Remove programs or Programs and Features icon

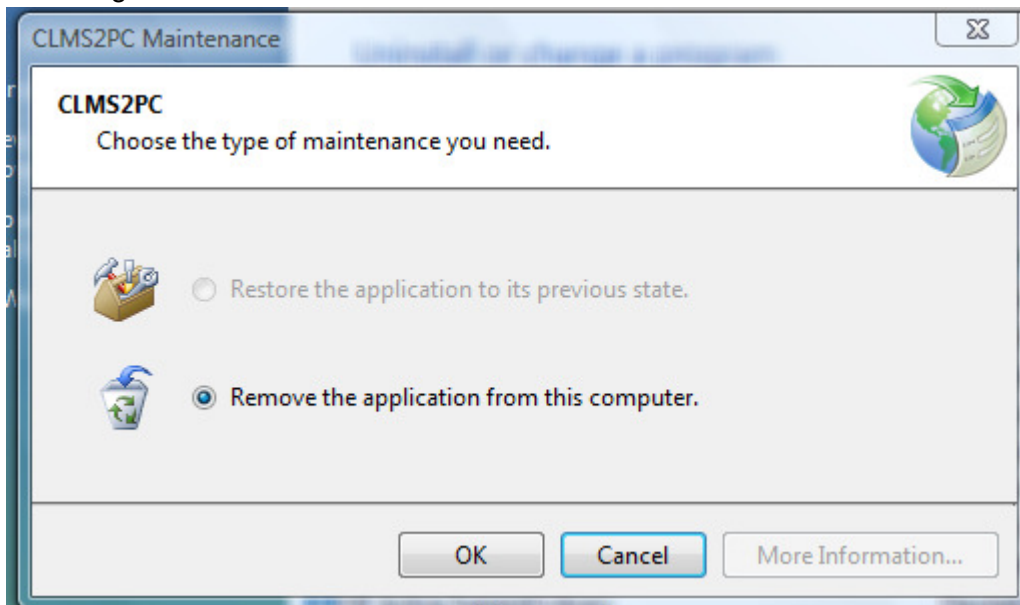


- 5) Locate the "CLMS2PC" and "CLMS2PC Application Base" each of these items must be un-installed independently. 1st Select CLMS2PC and click the "Change/Remove"

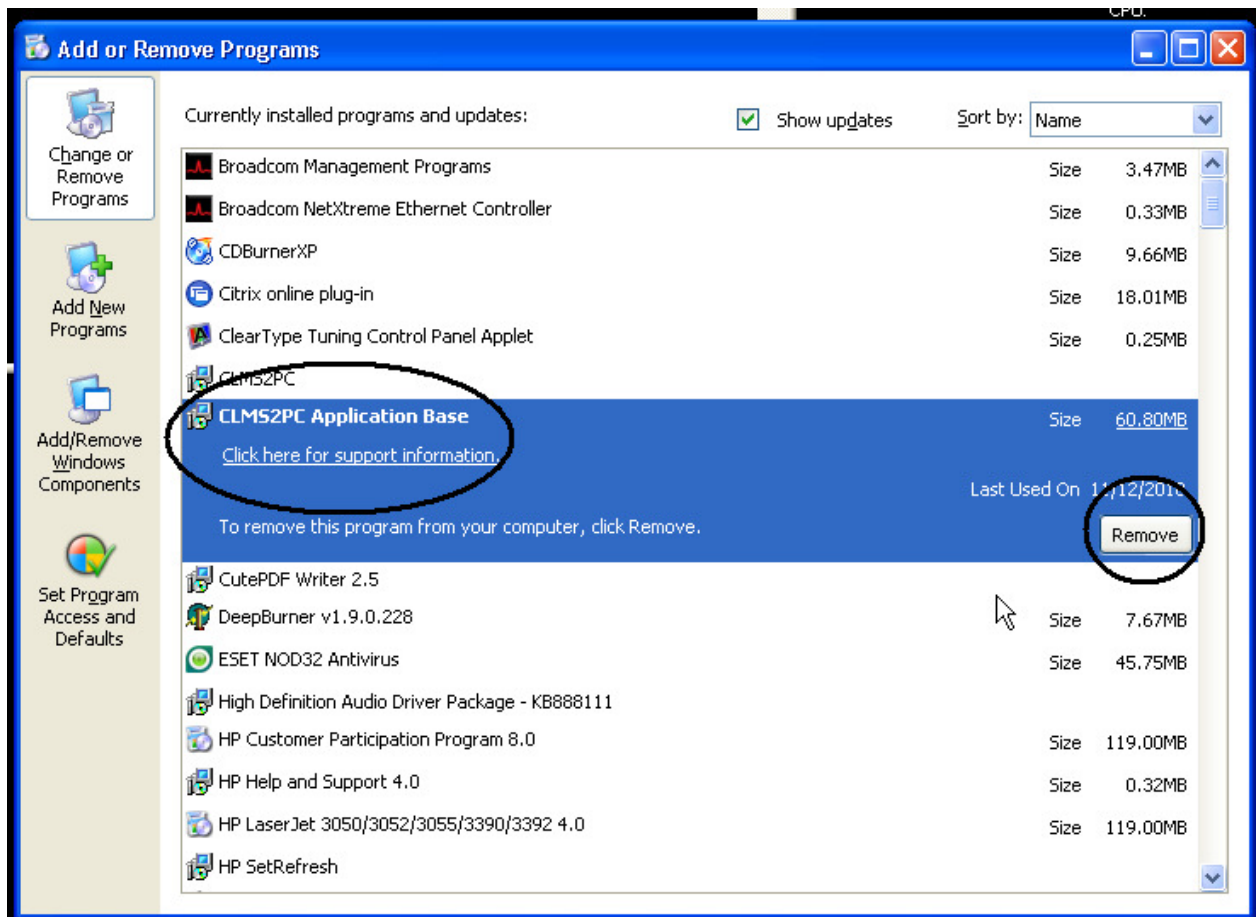
button.



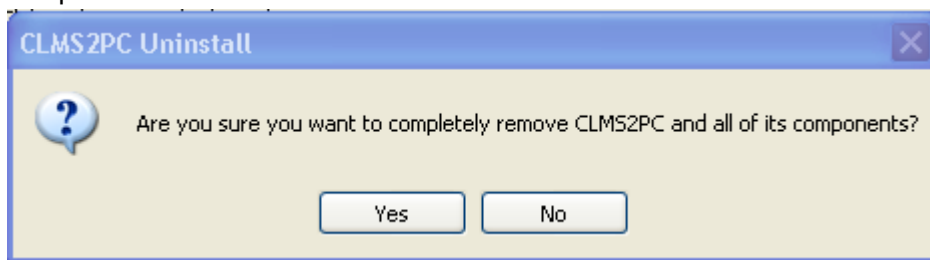
- 6) You will be prompted to either Restore to a previous state or to Remove the application you will select the “Remove the application from this computer” option and click OK, the message box shown below will disappear and you will note that the CLMS2 application is no longer listed.



- 7) Next select the “Remove” button or “Uninstall/Change” button depending on your version of windows.



- 8) You will be prompted to verify that you want to completely remove CLMS2PC and all its components? Click the “Yes” button.



- 9) A message shall appear indicating that CLMS2PC was successfully removed you may click the “OK” button.

