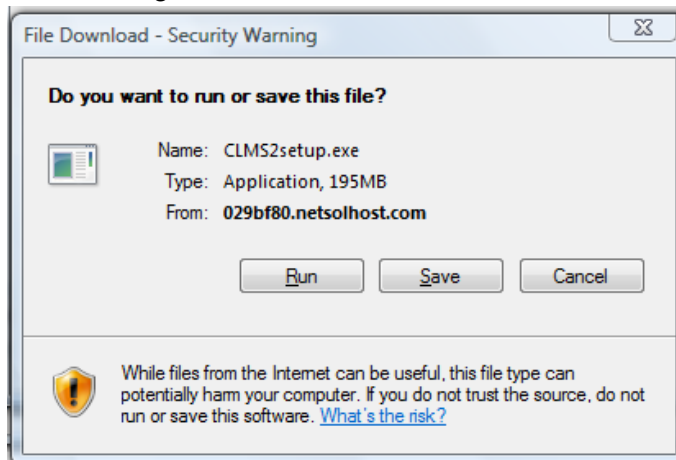
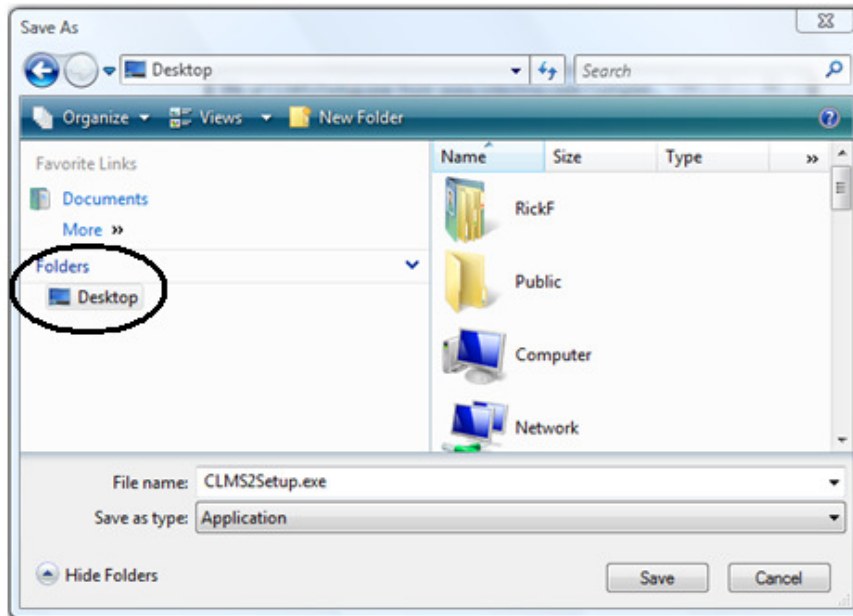


CLMS2PC Install application only

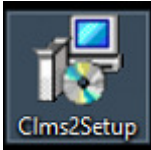
1. Type the listed address below in your web browser.
<https://clms2.elks.org/loadbalancer.aspx?file=CLMS2setup.exe>
2. You will be prompted with several options we recommend that you download the setup file to your desktop for ease of locating the setup program and to avoid having to download again. Click the “Save” button.



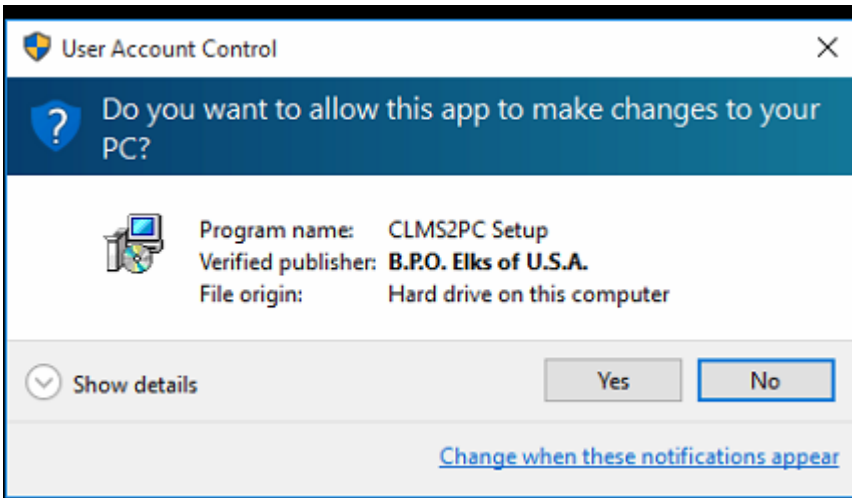
3. Click the “Desktop” icon that appears on the Save As window.



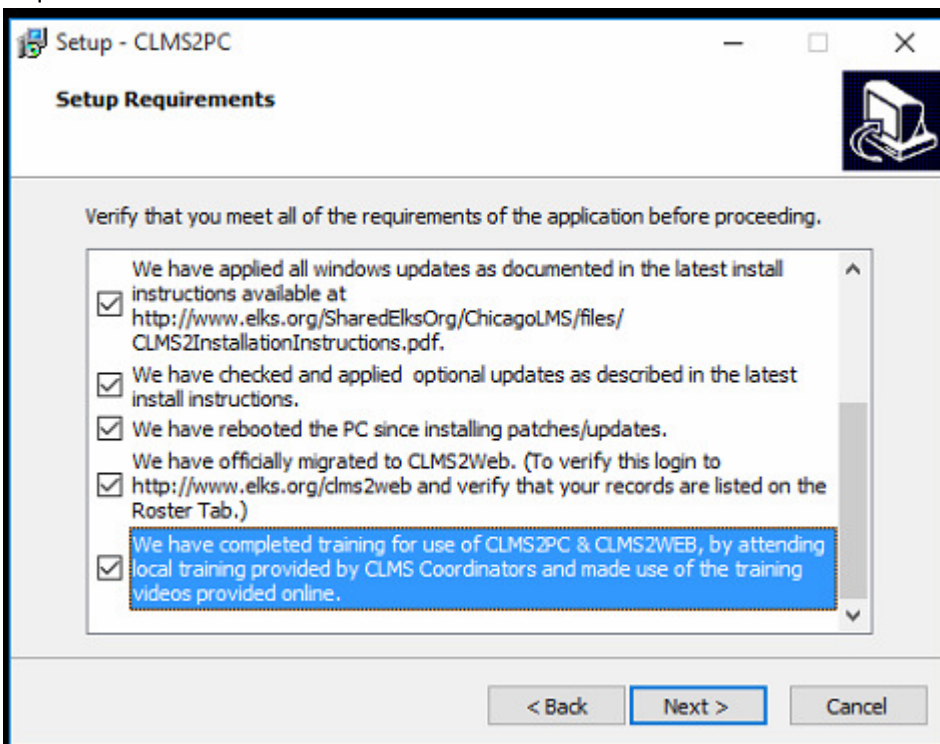
4. Once you have downloaded the setup application to your desktop or other location you can run the setup by double clicking on the setup icon.



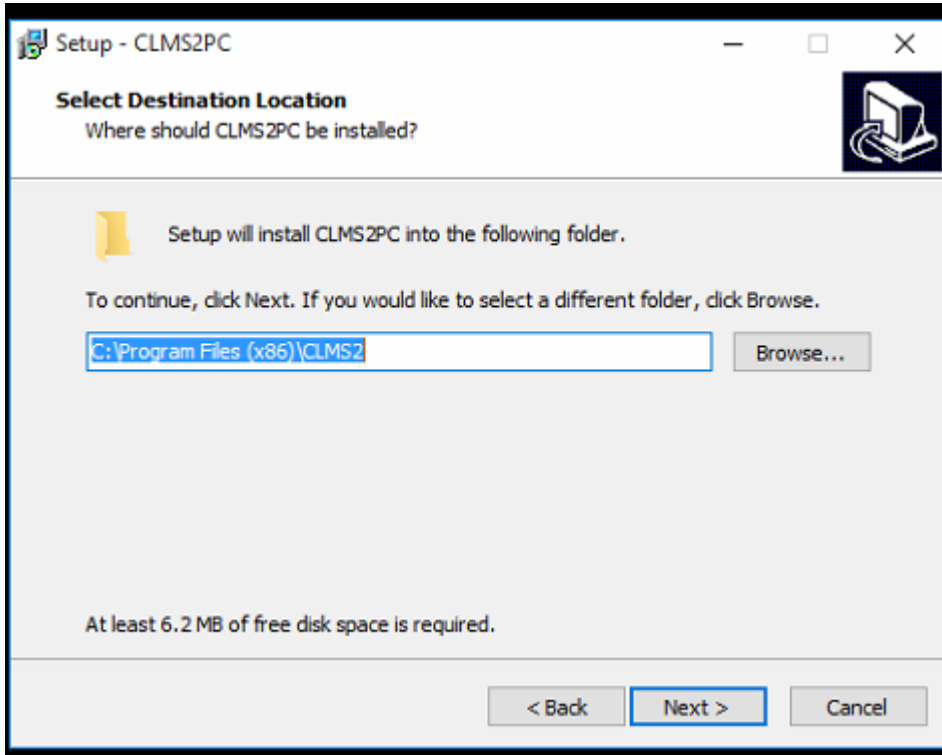
5. You will be prompted to allow this program to make changes to your PC? Click the “Yes” button to do so.



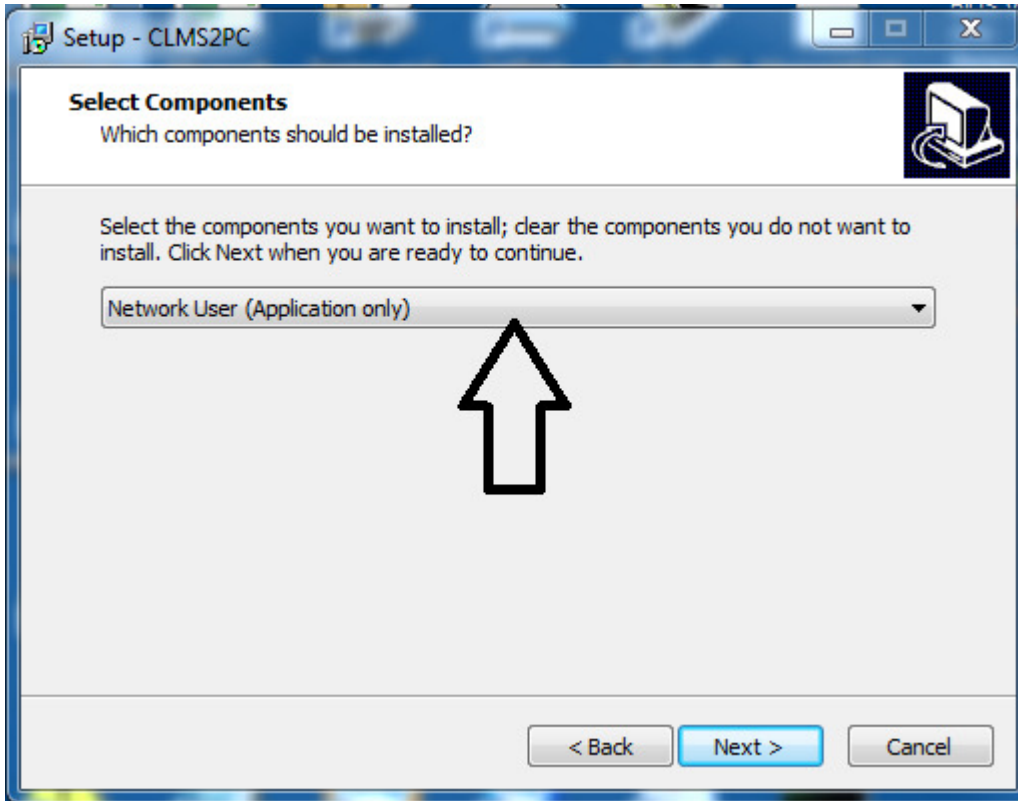
6. Click the “Next” button to continue when presented with the “Welcome to the CLMS2PC Setup Wizard”
7. You will be presented with a list of criteria read through each and check the box to accept these requirements if you satisfy them. The setup will not proceed until you have accepted the requirements.



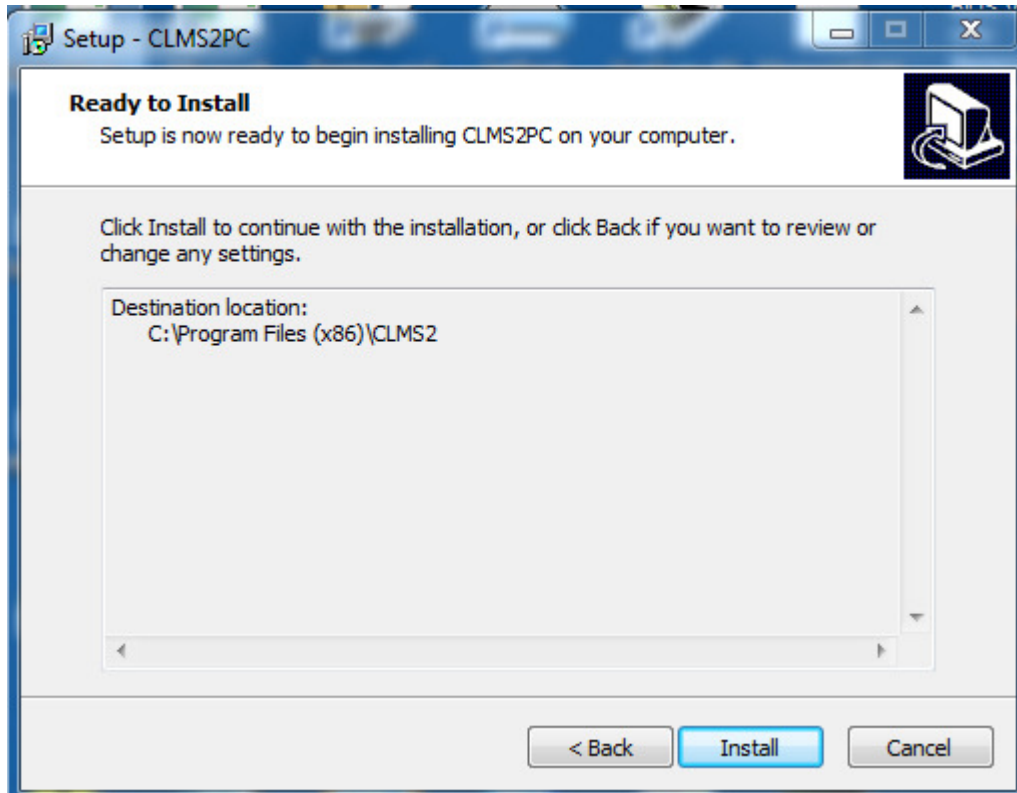
8. Leave the default location as is and click the “Next” button.



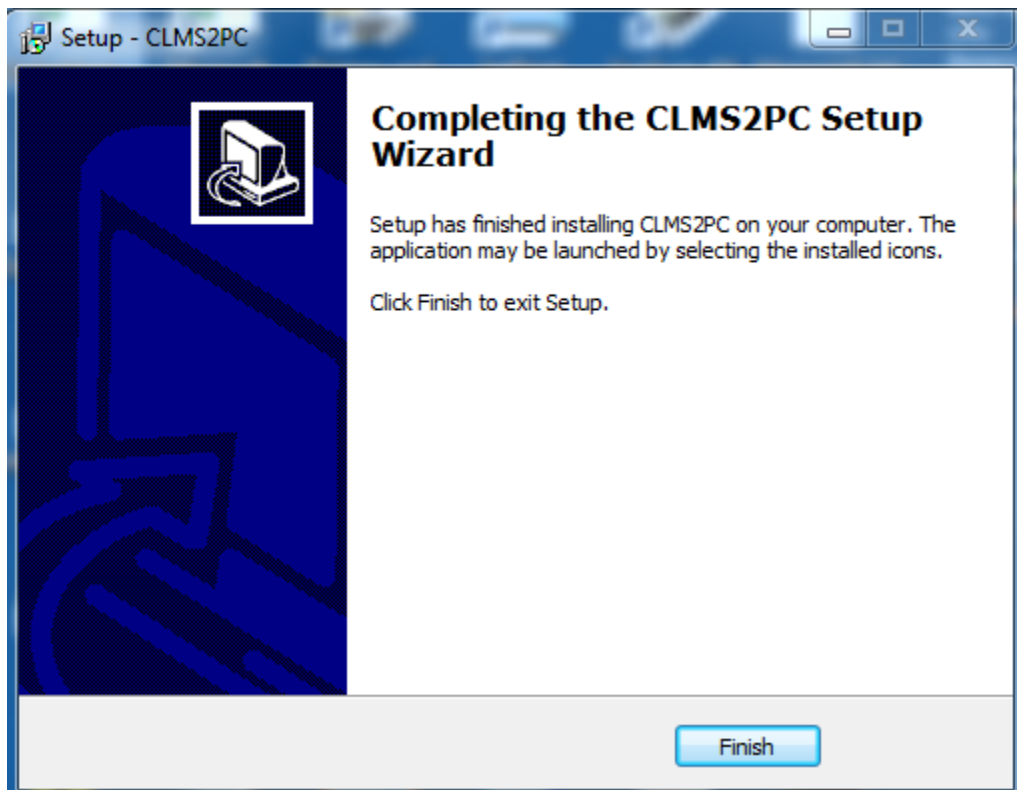
9. Change the Select Components drop down to “Network User (Application only)”



10. Leave the default location and click the Install button.



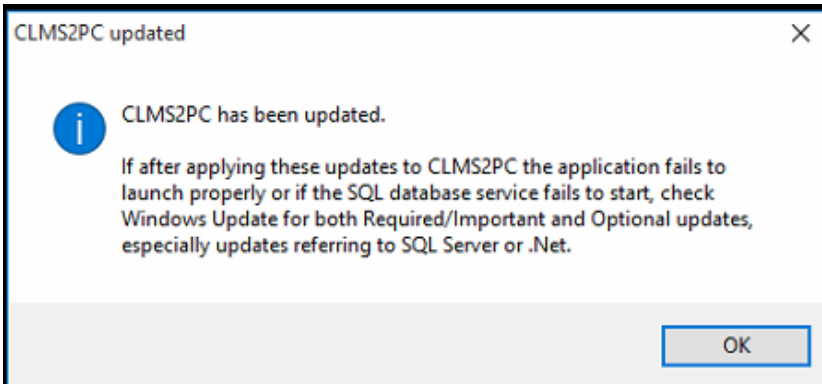
11. Click the "Finish" button



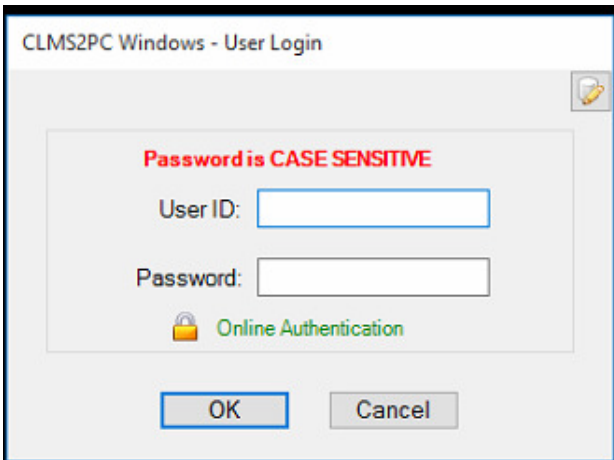
12. Now double click the clms2pc icon that should be on the desktop to run the application for the 1st time.



13. You will get a series of install and updating messages and will finally get a message indicating that the application has been updated click the “OK” button to proceed



14. Logon to CLMS2PC the application.



15. The program will present you with the Roster once successfully installed

#	Name	Record Type
003012	Bell Jr, Timmy	Member
004027	Bishop, Walter	Member
004026	Boone, Daniel D	Member
000012	Cain, Micheal J	Member
000009	Calamari Jr, Tom K	Member
000010	Collins, Jone K	Member
000011	Connors Sr, Chuck M	Member
004029	Dash, Bob D	Member
000013	Davies, Janet	Member
004015	Davis, Keith J	Member
004028	Dean, John	Member
004017	Dipper, Douglas	Member
000015	Doe Jr, GERALD D	Life Member
000021	Doe, Jane	Member
004016	Dolbit, Dan	Member
004025	Electra, Ken	Hon Life Member
004014	Flores, Greg	Member
000025	Houston, Whitney	Member
004018	Initiated, Ian	Member
004024	Investiga, Nicky	Hon Life Member
004022	Itto, Dominick J	Life Member
004021	Iza, Delanore	Life Member
004020	Lovola, Inqatius	Life Member
000019	Murphy, Ken A	Member
004019	Orientated, Owen	Member
000022	Pennypinch Sr, Shemp D	Life Member
004023	Proposed, Ted	Hon Life Member
000014	Python, Monty H	Member
004007	Ruth, Babe	Member
000020	Smith, John	Member
000023	Tonedef, Violet	Member