

CLMS2PC 2023 Application Install Instructions.

(DO NOT RUN THIS SETUP ON A 32-Bit version of Windows this will likely break CLM2PC 2018 and you will not have a way to re-install CLMS2PC 2018 back)

CLMS2PC 2023 Install process.

**** Please note that CLMS2PC 2023 will only run on 64-Bit versions of Windows 10 and Windows 11.** Also, Important make sure that your computer's operating system has the latest windows updates prior to installing the application. A computer that is not updated with Windows Updates may have issues preventing it from installing the application or running properly. **It is also important before starting this new installation process that the old version of CLMS2PC 2018 and its database are uninstalled (removed) from the computer before you run this setup.** Please see the Prerequisite instructions below.

[Prerequisite - Uninstall CLMS2PC 2018 before installing new version CLMS2PC 2023](#)

1. On the CLMS2Web site from the "Home" tab click the link "Download CLMS2PC for Windows"



2. On this page click the "[CLMS2Setup2023](#)" link to start the download.

CLMS2PC 2023 for Windows

This is the Download page for CLMS2PC for Windows. Here you will find what you need to download the installation and/or upgrades that may be needed periodically. Most of the incremental updates for CLMS2PC are automatically installed when you login to CLMS2PC.

CLMS2PC for Windows is the Windows-based application you'll use for printing (membership cards, dues statements, etc.), and advanced reporting. Sorry, it is only available for Microsoft Windows and there are no plans to expand beyond this.

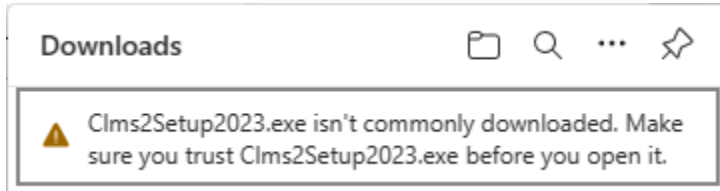
Note that we also have an online version of this program available for low volume and low frequency use but it does not have all of the features. The online program is referred to as CLMS2PC Online and can be accessed from the HOME tab and this should work from other operating systems.

Please download and print the [installation/upgrade instructions](#) before attempting to install/upgrade the software. These instructions also step you through uninstalling in case you need to start over.

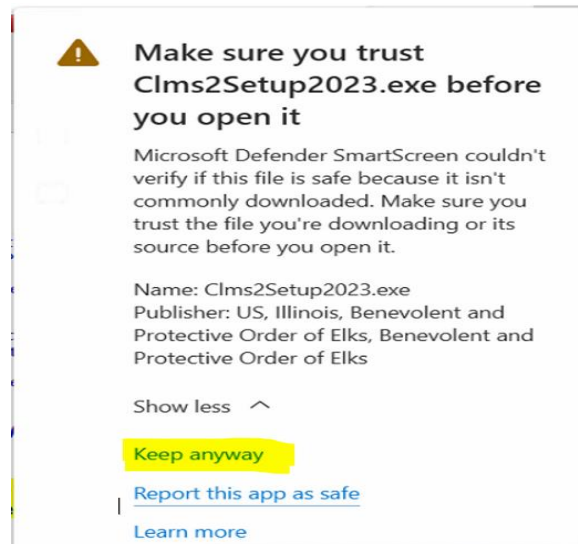
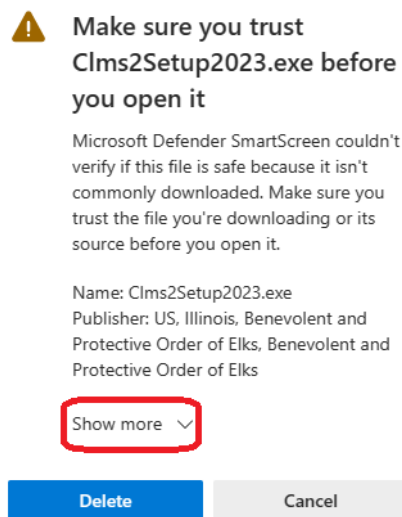
CLMS2PC for Windows Installation/Upgrade Program IMPORTANT, SAVE BEFORE RUNNING!:
[CLMS2Setup2023](#)

NOTE: CLMS2PC for Windows is a large (500+ MB) file, and may take a long time to download. The download includes various Microsoft software required to run CLMS2PC for Windows such as SQL Server Express. Please be patient!

3. If using **MS Edge** as your Browser, you may receive the following message:

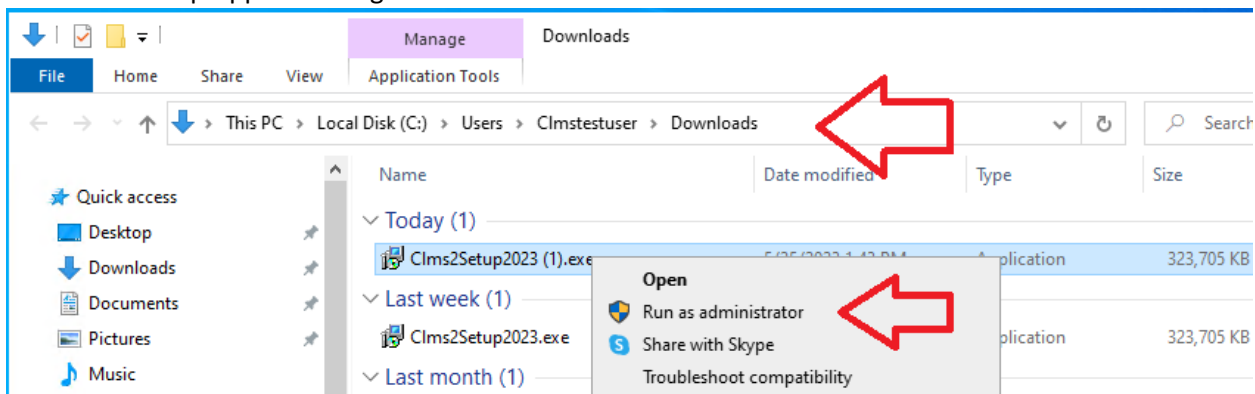


Hover your cursor over the message, you will then see "...” on the right side of the message. Click on the "...” and select “Keep”, you will see a popup message:



Select “Show More” and then select “Keep anyway”. This will allow the download to be completed.

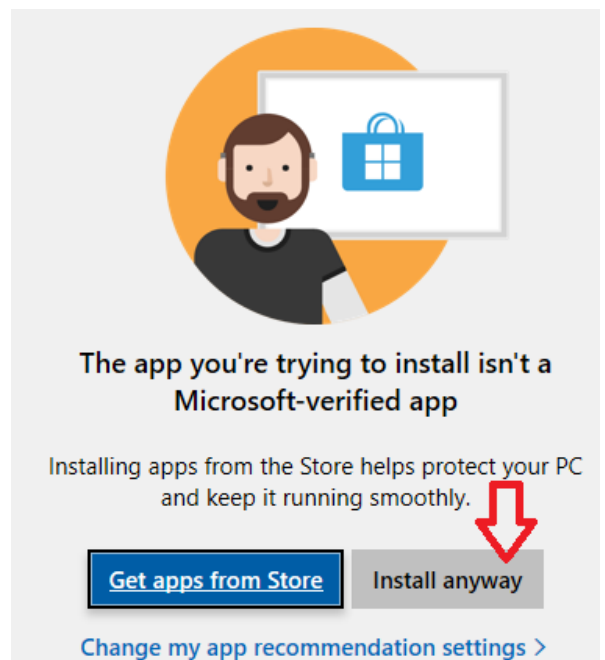
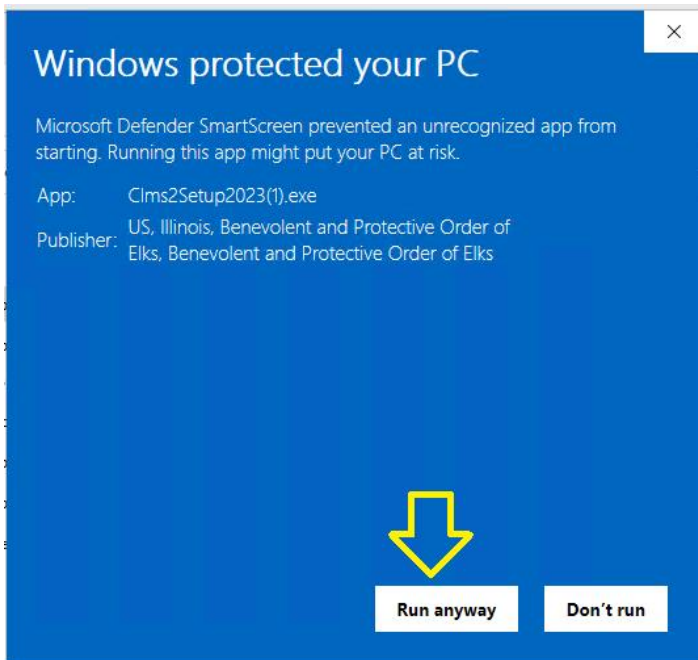
4. Go into File Explorer and select the “Downloads” folder. Locate the Setup Application right click and run as Administrator



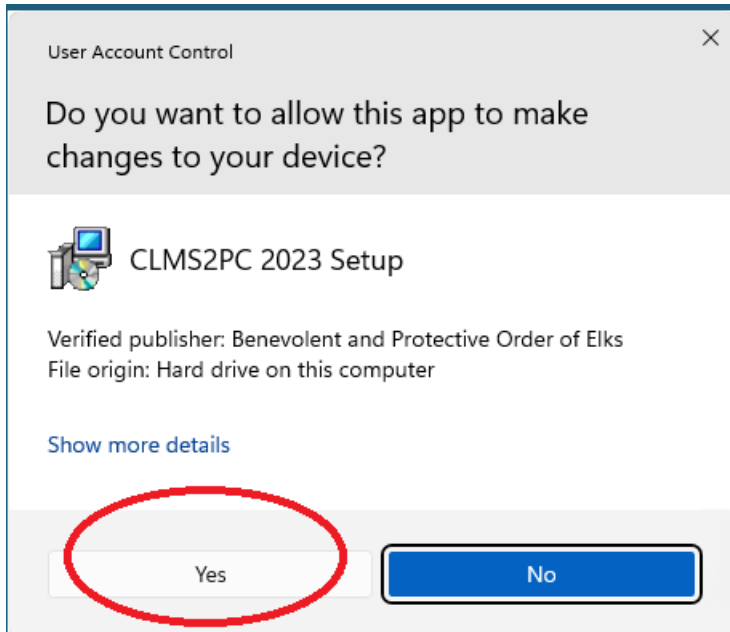
5. You may encounter this message typically on Windows 11 computers, “Windows protected your PC” Click the link More Info. **(Note You may see this message from time to time when a new setup is pushed out so do not be alarmed simply follow the directions in this step when encountered)**



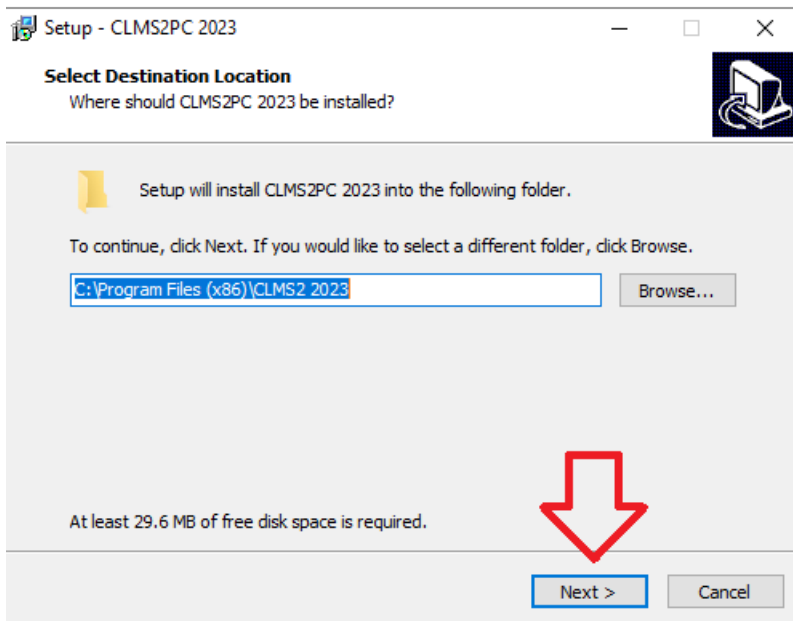
You may get one of 2 screens: Click the “Run anyway” or “Install Anyway”



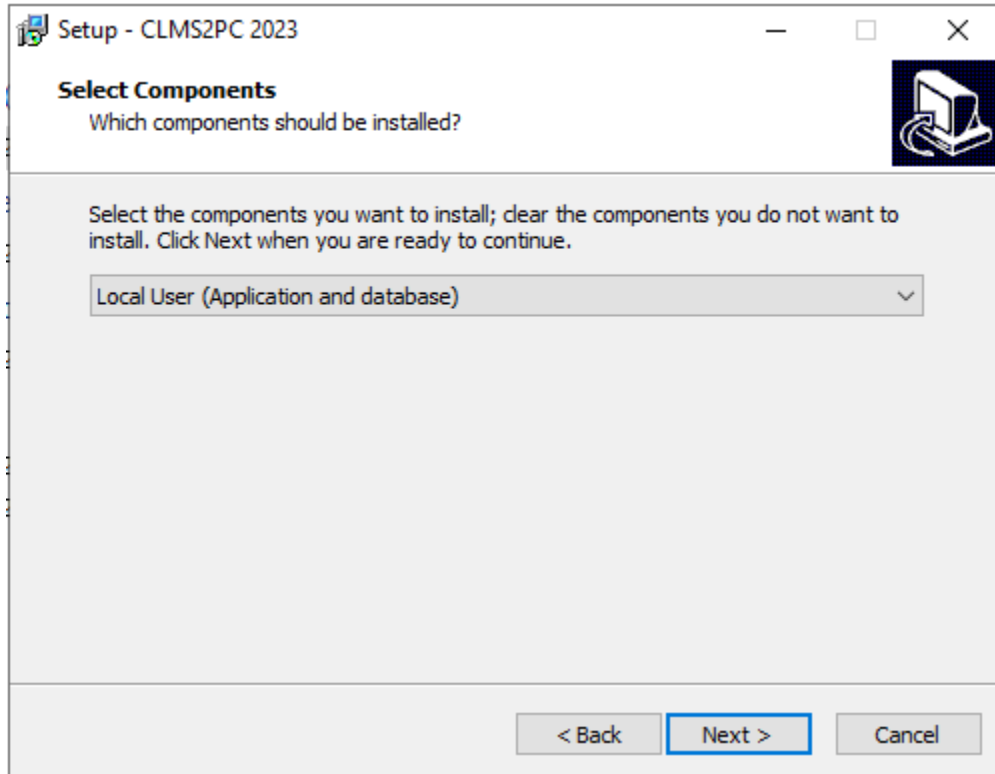
6. Click the “Yes” button.



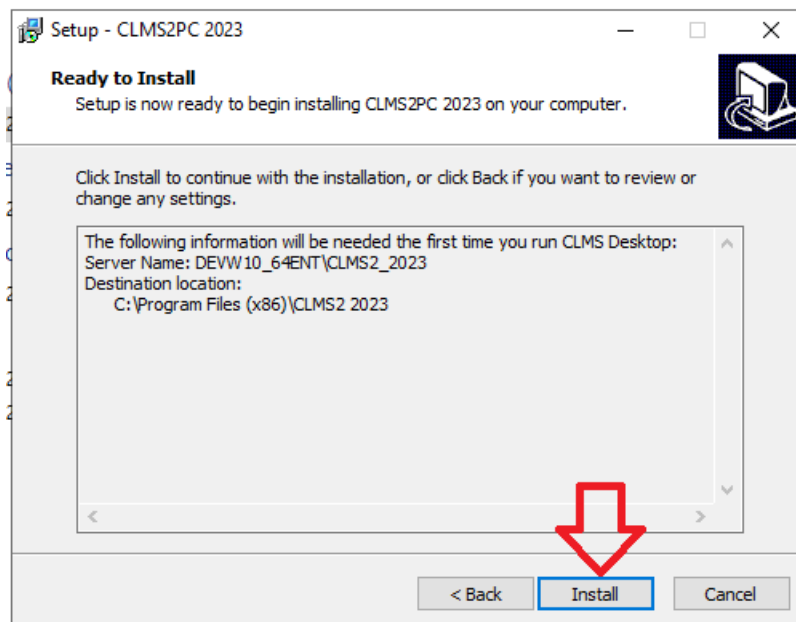
7. Leave the Default location.



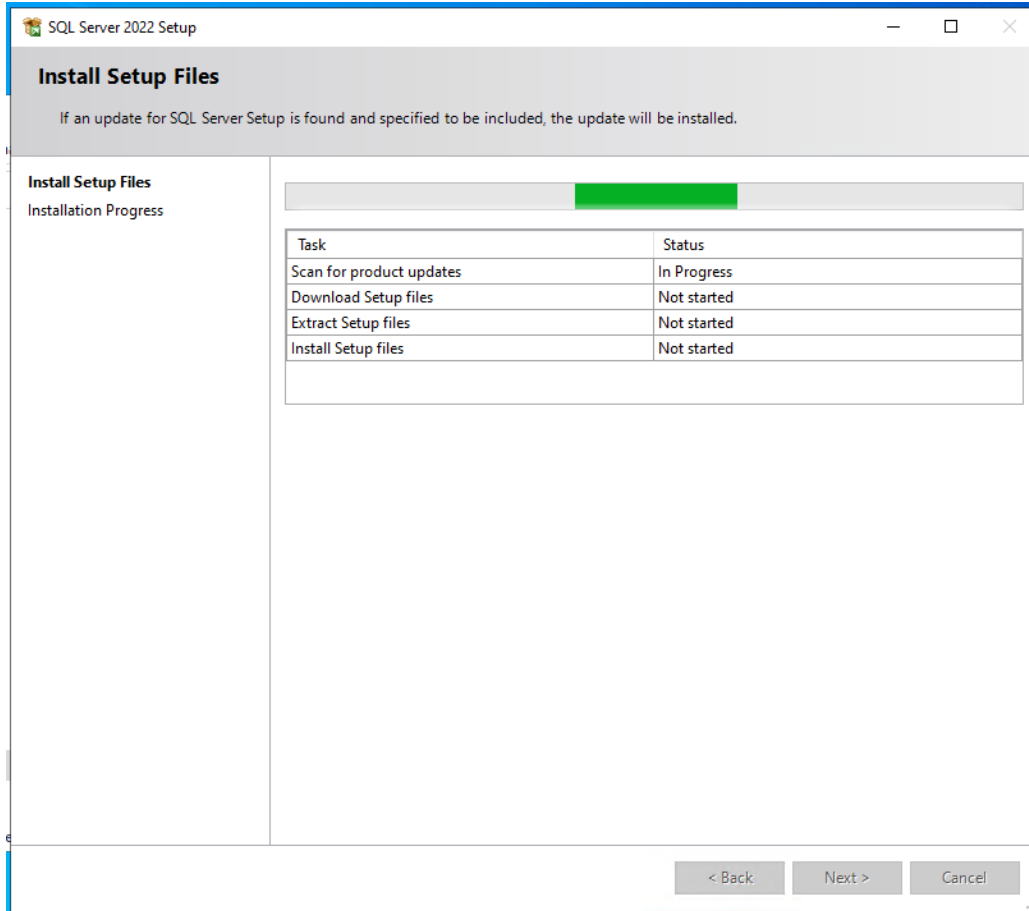
8. Select the **Local User (Application and database)** option then click the Next button



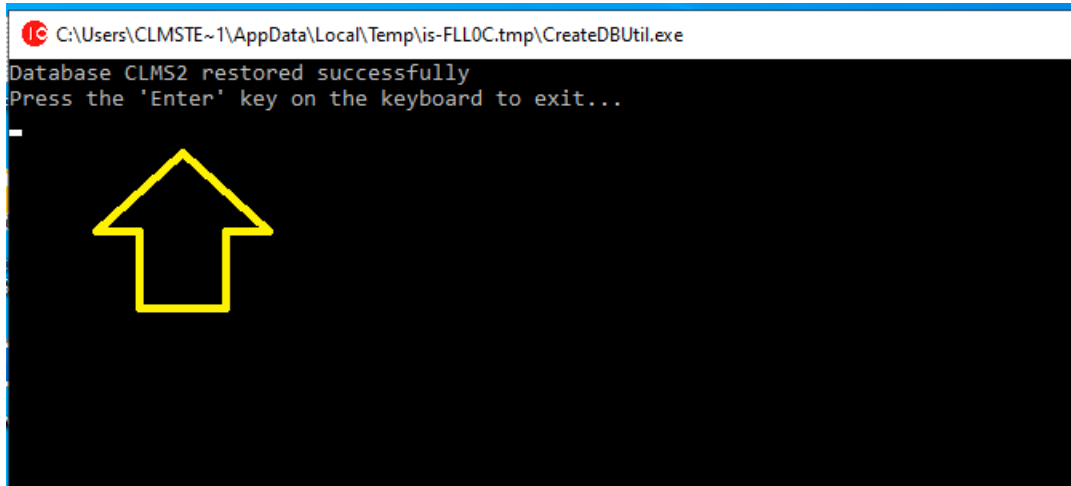
9. Click the Install Button



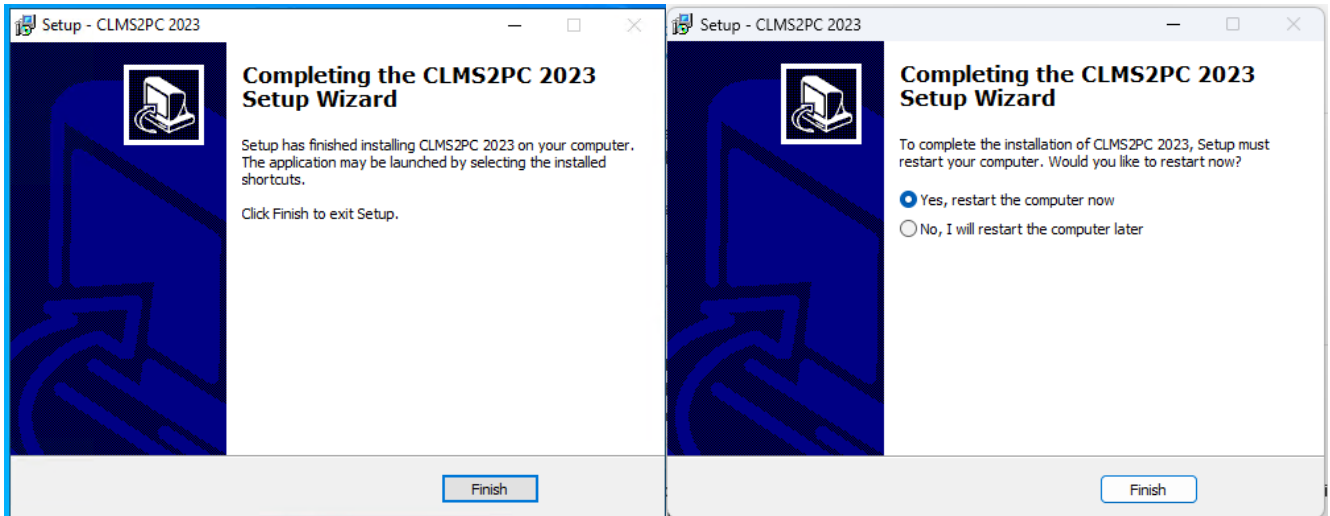
10. You will see a series of installation windows. **This process will take some time.**



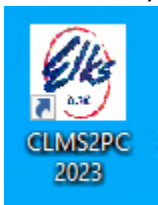
11. After SQL Server has been successfully installed you will be presented with a message box with the line **“Database CLMS2 restored successfully”**. If you do not see this message then most likely you did not perform the [Prerequisite - Uninstall CLMS2PC 2018 before installing new version CLMS2PC 2023](#)



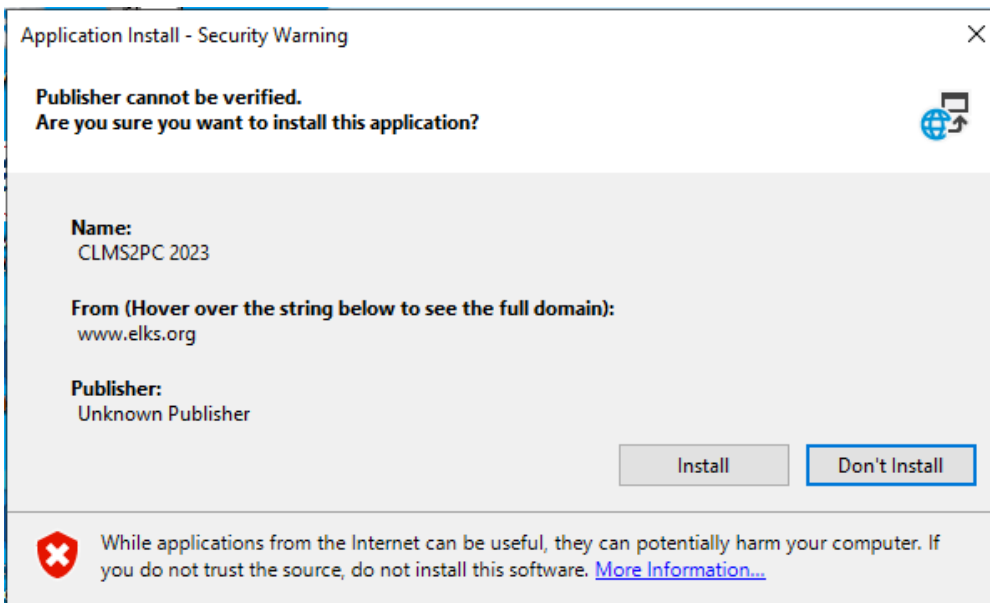
12. You may get either of these screens. Click the Finish button. If your PC doesn't automatically "restart", you should manually restart the PC at this point.



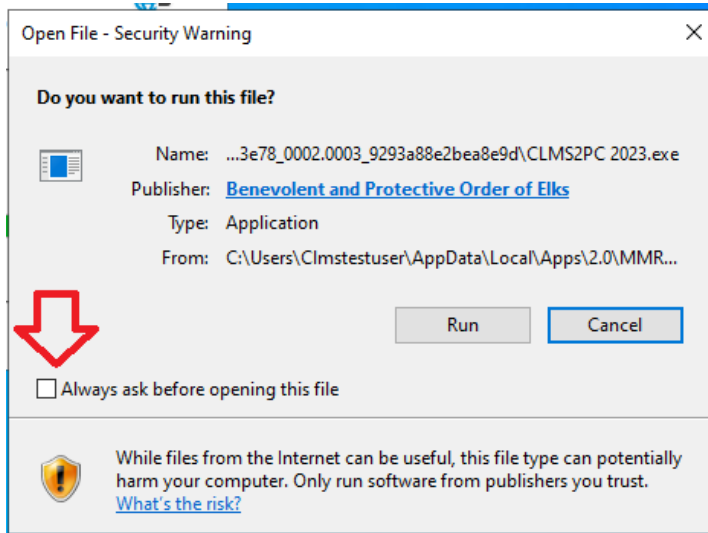
13. Next you want to launch the CLMS2PC 2023 Application to begin downloading your lodge's data. Double click the icon on your desktop called "CLMS2PC 2023"



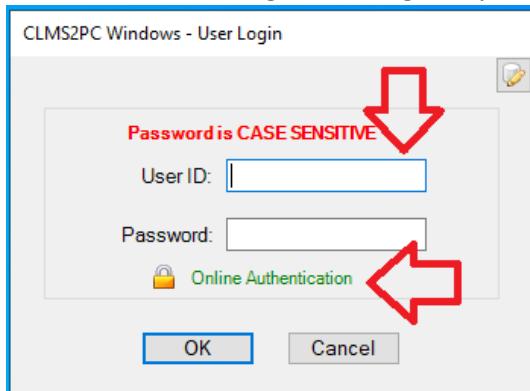
14. Click the "Install" button



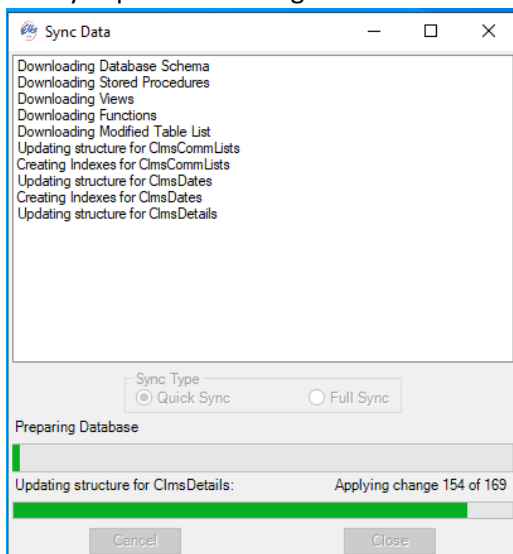
15. You may encounter a security warning message box if you do uncheck the box “Always ask before opening this file”. If on windows 11 you may get prompted as in a preceding **step 5**. Simply follow the instructions presented in step 4 if you encounter a blue message box “Windows Protected your PC”.



16. You will get the login window, provide your elks.org user id and password, also note that there is a Green Online Authentication message indicating that you have an online connection to the data service.



17. The sync process will begin.



18. You should get a Sync completed successfully.

CLMS2PC

Sync

Fiscal Year: 4/1/2023 - 3/31/2024

Version number 2.3.0.4

Last Sync: Thursday, May 25, 2023 2:23 PM CST

Sync completed successfully

Getting Help

Please note that if you need assistance or software support it is always best to open a ticket so that you are part of the support queue. Since we are supporting all CLMS2PC Clients in the B.P.O.E the fastest way to get support is to open a ticket.

[Open a support ticket here](#)